

PAPILLOMAVIRUS TYPE 16 (Ca Ski cells) DNA CONTROL

MBC067: Purified DNA of Papillomavirus type 16.

LOT SPECIFICATIONS:

Microorganism: Papillomavirus type 16.

Preparation: Grown in Ca Ski transformed cells.

TECHNICAL DATA:

Presentation: Lyophilized.

Concentration: 50 ng/μl when reconstituted.

Instructions for reconstitution:

- 1.-Centrifuge 1 minute at 1000 g.
- 2.-Add 100 μl of sterile bidistilled water and mix until completely resuspended. The concentration will be 50 ng/μl.
- 3.-Shake with vortex for 30 seconds to dissolve and homogenize completely.

Extract preparation: SDS and proteinase K treatment, phenol/chloroform extraction and ethanol precipitation.

Shipping and storage:

Special transport conditions not required. Reconstitute upon receipt. Store between -5°C and -40°C after reconstitution. Avoid multiple freeze-thaw cycles as product degradation may result.

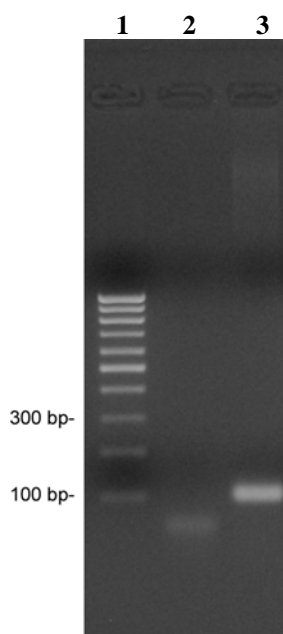
Recommendations and precautions:

This product is not for diagnostic use.

This product is for research use only.

This lot of DNA was prepared from Papillomavirus type 16. The material should be handled and disposed of as potentially infectious. Observe the local regulations for clinical waste disposal.

PCR analysis of DNA control: PCR analysis was performed with a specific oligo pair on 50 ng of purified Papillomavirus type 16 DNA. The reaction produced a 96 bp fragment. It was visualized on a 2% agarose gel using ethidium bromide staining. The gel photograph is shown below:



Line	Sample
1	Molecular size marker (100 bp)
2	Negative control
3	96 bp amplified fragment

For inquiries please contact:
customerservice@vircell.com

REVISED: 07/2008

FOR RESEARCH USE ONLY

Manufacturer: VIRCELL, S.L. Pza. Dominguez Ortiz 1. Polígono Industrial Dos de Octubre. 18320 Santa Fe *GRANADA* SPAIN* Tel.+34.958.441264* Fax+34.958.510712
<http://www.vircell.com>