

## BORRELIA BURGdorFERI DNA CONTROL

**MBC076:** Purified DNA of *Borrelia burgdorferi*.

### LOT SPECIFICATIONS:

**Microorganism:** *Borrelia burgdorferi*.

**Preparation:** Grown in BSK-H medium supplemented with gelatin and rabbit serum.

### COMPONENTS:

Lyophilized genomic DNA of *Borrelia burgdorferi* ( $1 \times 10^4$ - $1.5 \times 10^4$  copies/ $\mu$ l once reconstituted). DNA quantification has been performed with real-time PCR from Stratagene (ref. Mx3005P).

### TECHNICAL DATA:

**Presentation:** Lyophilized.

#### Instructions for reconstitution:

- 1.-Centrifuge the lyophilized genomic DNA for 1 minute at 1000 g.
- 2.-Add 50  $\mu$ l of sterile bidistilled water and mix until completely reconstituted. The concentration will be  $1 \times 10^4$ - $1.5 \times 10^4$  copies/ $\mu$ l once reconstituted.
- 3.-Shake with vortex for 30 seconds to dissolve and homogenize completely.

**Extract preparation:** SDS and proteinase K treatment, phenol/chloroform extraction and ethanol precipitation.

#### Shipping and storage:

Special transport conditions not required. Reconstitute upon receipt. Store between  $-5^\circ\text{C}$  and  $-40^\circ\text{C}$  after reconstitution.

The DNA solution should be aliquoted in order to avoid repeated freezing and thawing.

By following the instructions for use, the product is stable until the expiry date stated on the labels.

#### Recommendations and precautions:

This product is not for diagnostic use.

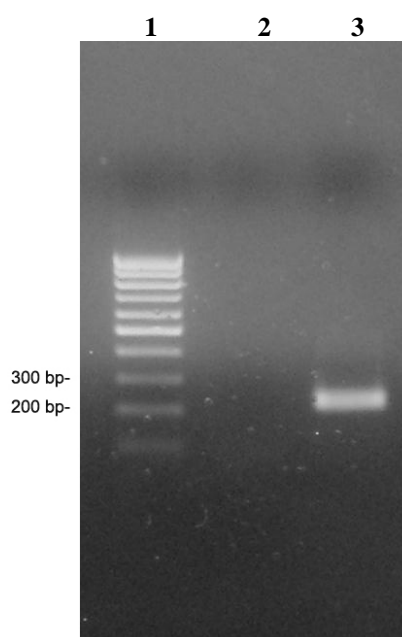
This product is for research use only.

This lot of DNA was prepared from *Borrelia burgdorferi*. The material should be handled and disposed of as potentially infectious. Observe the local regulations for clinical waste disposal.

Nucleic acids should not be repeatedly frozed and thawed. It is recommended to reconstitute and aliquote the control upon reception.

The dilutions should be done just before use. Frozen of dilutions containing less than 1000 copies/ $\mu$ l is not recommended as copy numbers can be lose.

**PCR analysis of DNA control:** PCR analysis was performed with a specific oligo pair on purified *Borrelia burgdorferi* DNA. The reaction produced a 222 bp fragment. It was visualized on a 2% agarose gel using ethidium bromide staining. The gel photograph is shown below:



Line	Sample
1	Molecular size marker (100 bp)
2	Negative control
3	222 bp amplified fragment

For inquiries please contact:  
customerservice@vircell.com

**REVISED: 11/2008**

#### FOR RESEARCH USE ONLY

Manufacturer: VIRCELL, S.L. Pza. Dominguez Ortiz 1. Polígono Industrial Dos de Octubre.18320 Santa Fe \*GRANADA\* SPAIN\* Tel.+34.958.441264\* Fax+34.958.510712  
<http://www.vircell.com>